



1080P OUTDOOR SECURECAM

MT4059



User Manual

Notice	3
Transport and Handling.....	3
Product introduction.....	4
Product summary.....	4
Main features	4
Package for typical production	4
The camera features	4
Installation and Operation Guide	4
View video by mobile phone software.....	4
Overview	5
View video by wired connection in LAN	6
1. Status bar.....	7
2. Choose video stream.....	8
3. Playback	8
View video by WiFi connection in LAN	8
View video in internet.....	9
View Video by PC client software	10
View Video by other way	10
Other Web Browser.....	10
Other common software	10
All settings	11
Video setting	11
Video parameters.....	11
Audio parameters	11
Image parameters.....	11
Web setting	12

Basic web setting	12
WIFI setting.....	12
WAN access setting.....	12
ONVIF setting.....	13
Alarm setting	13
Motion Detection Setting	13
Alarm mode setting	14
Alarm time setting.....	14
Advanced setting	14
User management	14
E-mail Setting	15
FTP setting.....	15
Multiple settings.....	15
System setting	16
Device information	16
Date and time setting.....	16
Initialize setting.....	16
System Log	17

Notice

- Keep away from the places for high-temperature, heat source and direct sunlight;
- Keep away from water and when get wet, cut off the power immediately.
- Avoid using at damp environment; the reference range for operation humidity is below 85%RH.
- Operation temperature is $-10^{\circ} \sim +50^{\circ}$
- Please install it horizontally or wall mount, avoid strenuous vibration and do not place other items on top of the unit.

Transport and Handling

- Please handle the item with care.
- Do not use in areas around condensation.
- Please disconnect the item from the mains before moving.



1. Be careful not to damage the camera or subject it to strong impacts or shocks.
2. Do not touch the optical components for the image sensor, such as the lens, if necessary, please place a clean and moistened cloth with alcohol and wipe the dirt gently; When not in use, please place the dust cover on to the item to protect the image sensor.

3. Do not aim the camera directly into the sun or at other intense light sources that could affect the image quality, this will also shorten the service life for the image sensor.
4. Keep away from laser when it is working, otherwise the image sensor can be damaged.
5. If the equipment is not working properly, please contact the store or the service centre, do not disassemble or modify the equipment in any way.

Product introduction

Product summary

Thank you for choosing this high definition SmartP2P IP Camera, the IP Camera combines a high definition digital video camera with network connectivity and a powerful web server to bring high definition video to your desktop from anywhere on your local network or over the Internet. It is very suitable for family, shops, office and so on.

Main features

- Support Plug and Play function, view video via free iSmartviewPro mobile phone or PC client software.
- Support 3 kinds of H.264 video stream simultaneously, suitable for Local, Internet and Cross-platform view;
- Support resolution for 1920x1080/1280x720/640x360/320x180;
- Support 4 ways view in a video stream;
- Support 802.11b/g/n protocol, build-in WiFi module to perform wireless monitoring;
- Built-in web server, use one port to send all the data, users can facilitates network setting;
- Support ONVIF and RTSP protocol, easy to integrate it to NVR or large client software;
- Support WPS/QSS function;
- Support multi-languages web interface, support 4 split screen to perform several view at same time;

- Manufacturer puts a label of DDNS at the bottom of each IP Camera. When IP Camera is connected to the internet, this URL can be used to visit the device;

Package for typical production

- Power adaptor 12V,
- CD,
- Network Cable,
- Bracket A,
- Antenna.

Notice: Please check carefully if all listed items are included in the package, if anything missing, please contact your vendor.

The camera features

- Max. resolution is 1080p;
- Build in IR-CUT, 3.6mm lens;
- Build in 36pcs array IR LED, up to 20 meter night vision;
- Build in WIFI module, support 802.11b/g/n, easy for connecting wireless router;
- Support waterproof level IP66 for outdoor use.

Installation and Operation Guide

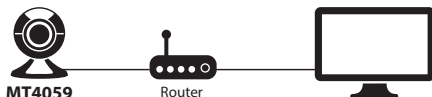
View video by mobile phone software

You need to download and install "iSmartviewPro" mobile phone client software from attached CD, and then scan QR code on the camera body to add camera for viewing video, for detail, please refer to application guide.

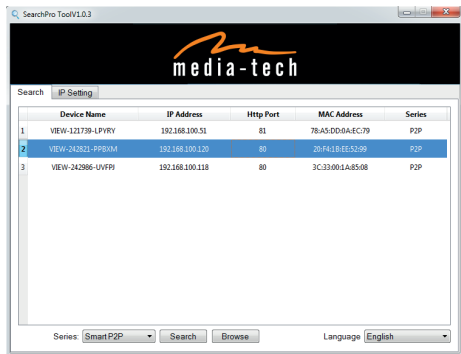


EN View video by wired connection in LAN

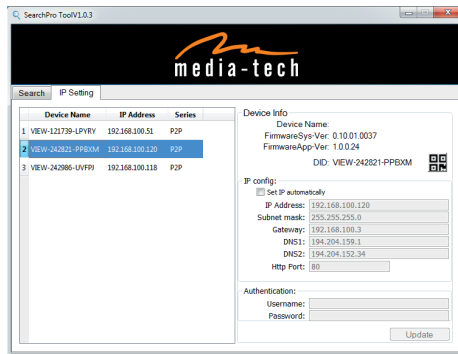
Power on the IP camera (please check carefully the voltage of power adaptor, don't insert incorrect power, otherwise it will be damaged), connect IP camera to router by network cable and connect computer to the same router.



Insert attached CD to computer driver, install "SearchPro" application and run it, you will see interface, please operate as the following steps:

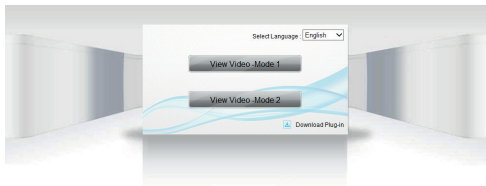


- 1) Click "Search" (Please make sure your firewall will not block up the item to be searched).
- 2) Choose a camera and click "IP setting" tab



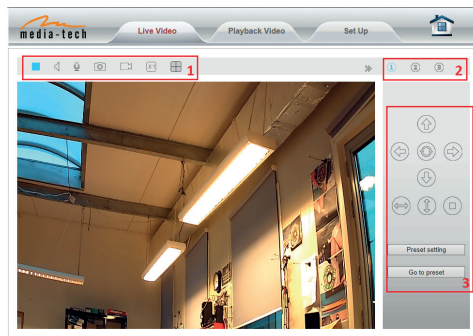
- 3) Open web browser and enter address as given in "IP address" – this is address assign to selected camera. You can also double click camera name in the "Search" tab; For instance given above you should enter *http://192.168.100.120*
- 4) Enter user name (default: **admin**) and password (default: **123456**) and login IP camera to view the video. (please use IE browser at first time).

Notice: Need to download ActiveX when first use, click "download ActiveX (when first use)", will display prompt, click 'Download Plug-in' will download and install the "HY-Player" plug-in automatically.



Tips: You can hold on reset button on the camera for 10 seconds to restore factory default if you forget user name and password, or not sure the device parameters.

Click "View Video – Mode 1" to access video interface as below.



1. Status bar



- 1) Enable/disable on-line view;
- 2) Not available;
- 3) Not available;
- 4) Save snapshot to local disk;
- 5) Manually start/stop recording onto local disk;
- 6) Enable digital zoom;
- 7) Enable/disable multi-view mode.

Note! In this window file location path are defined on local PC computer, in this window you can manually start/stop recording or make snapshot. For automatic surveillance function like motion detection go to “Settings” and define SD card or FTP server as file storage.

2. Choose video stream

You can choose primary stream or second stream, third stream to view the video. Recommend to view by primary stream in LAN, by second stream in WAN and by third stream in mobile phone. This option is good for preview previously defined quality stream in “Settings”.

You can view the video by four-in-one on the same screen, but need to set the camera in multiple setting.

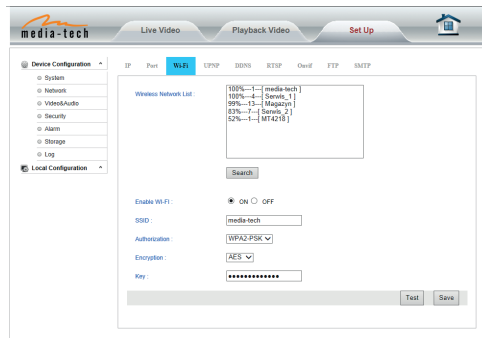
3. Playback

- In order to playback recorded files store onto local disk go to “Playback Video” tab.

View video by WiFi connection in LAN

After finishing the wired connection you can connect the camera by WiFi.

Login camera in wired connection and enter wifi setting, and then operate as the following step.



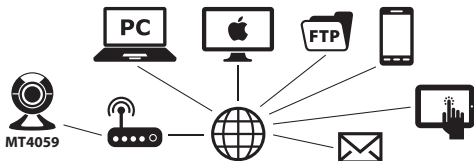
Select 'On' and click 'Search', and then select wireless router in pop-up menu, click 'OK' and enter password if needed, click 'save' to save the wireless settings. And you can click 'Test' to check if the wireless setting is successful. After setting successfully, please pull out network cable and reboot the camera to use the wireless connection to view video.

Because the camera supports WPS/QSS, so you can set wireless by simple way as below.

1. Please confirm if the router connected to camera supports WPS/QSS (you can check user manual of the router or get the support from router factory);
2. Press WPS/QSS button on the router, it will launch the function.
3. Press and hold on reset button for 2~5 seconds after it ran normally (not need connect cable), it will launch the WPS/QSS function, then match the setting with the router.
4. Unplug power adaptor and reboot the camera, then you can use the wireless connect function.

Notice: The camera will automatically stop the function when the matching is unsuccessful after continuing 50 seconds. Due to difference in the working of the routers, we don't guarantee that WPS function can be used successfully.

View video in internet



You should connect your internal network to the internet first and configure port forwarding, please refer to your router manual for further details.

For example: operation step of port forwarding.

1. Please go to the setting interface of Router, and choose "Port Forwarding";
2. Choose "Add custom Service";
3. Input IP camera http port;
4. Input LAN IP Address of the camera, click "Apply"

After finishing the port forwarding, you can use WAN IP address of router and http port of camera to visit the camera by remote computer.

Notice: because the routers are different, so the interface and setting method of router are also different, how to do the port forwarding for various routers, please refer to the user manual of your router or consult with router manufacturer.

View Video by PC client software

You need to install "iSmartviewPro" PC client software from attached CD, and then add camera to view live video. For detail, please see the "User manual for iSmartViewPro".

View Video by other way

Other Web Browser

In the Windows OS, for using browser with IE kernel, user must download the ActiveX. While for Safari and Firefox browsers, please Download "QuickTime" plug-in and install it to access the IP camera. After installation, please run the QuickTime program to access the QuickTime Preferences dialog box from Edit Menu, example as below. Click "Advanced", select "custom." in the Transport Setup. It pops up the Streaming Transport dialog box. Please select "HTTP" for transport protocol and "80" as port ID, click "ok", and then return to Transport Setup to change "Custom.." to "Auto". Finally, click "ok" at the bottom. After finishing these settings, run the Firefox or Safari browser to view the video.

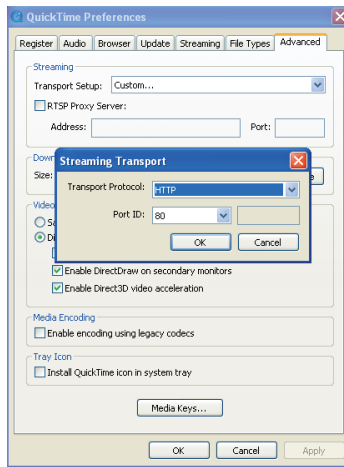
In Mac computer, the Quicktime is installed by default, so the user simply accesses setting tool folder at application folder and run the command program, enter command by command line mode:

qtdefaults write TransportSettings HTTP 80

10

And then run the Safari browser to view the video.

Note: Please select the G.711 audio code format for audio playback in Quicktime plug-in.



Other common software

As the device supports RTSP protocol, you can use VLC player to play IP Camera video. It is compatible with VLC 1.1.12 version or above. Please use below URL to visit: <rtsp://ip:port/live/ch0> (View the video by first stream)

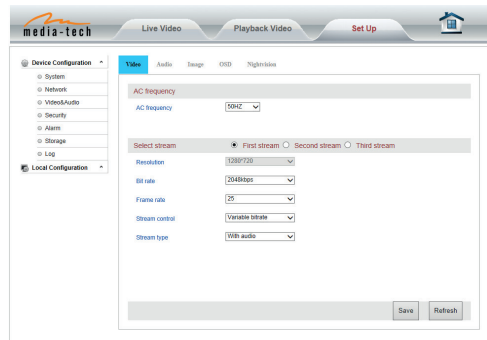
rtsp://ip:port/live/ch1 (View video by second stream)
 rtsp://ip:port/live/ch2 (View video by third stream)
 The port is RTSP port.

All settings

Video setting

In the setting, you can adjust the video, audio and image setting according to actual environment for getting best effect.

Video parameters



First stream is for best quality (view by LAN connection), third stream is for mobile devices (small size, better compression, less data transfer).

Audio parameters

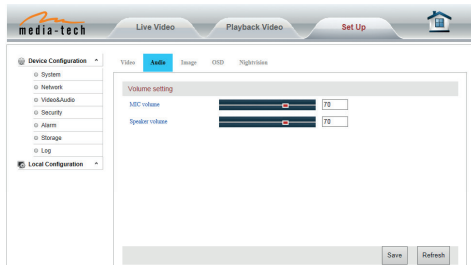
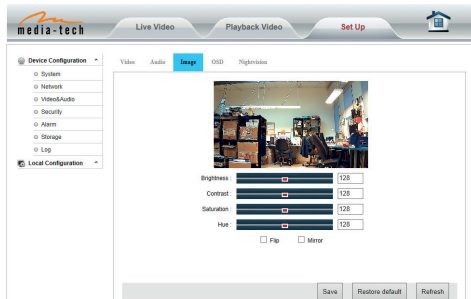


Image parameters



You can disable IR LED when you don't need it, go to "Nightvision" tab and check "turn off IR LED".

Web setting

Basic web setting

The cameras support RTSP protocol, if select “on” of “RTSP authority verification”, you need to enter user name and password when invoke video by RTSP protocol.

WIFI setting

Please refer to chapter “View video by WiFi connection in LAN”.

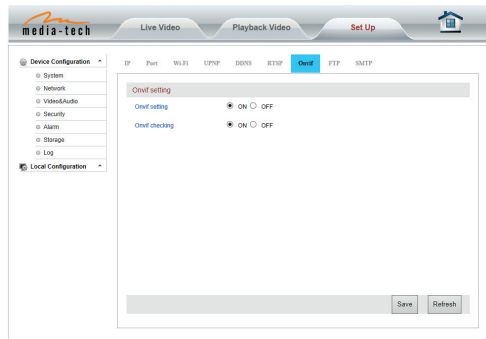
WAN access setting

In chapter “View video by WiFi connection in LAN”, you have known how to do port forwarding. After the success of the port forwarding, you can also visit camera by DDNS. The manufacturer has established a DDNS system, and allotted a DDNS to every device, the user can view it from remote PC.

User can also use third party DDNS, such as www.dyndns.com. User applies a free domain name from this website and fills the info into below blanks and saves the settings. Then the domain name can be used.

Notice: Using the third party DDNS, if the http port is not 80, the port number should be adding to the domain name with colon. Example: ***http://mydomain.dyndns.org:81***.

ONVIF setting

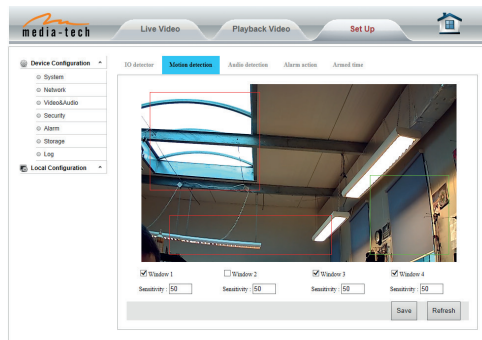


The camera supports ONVIF protocol, so it can be interconnected with other factory camera with ONVIF.

Tips: The device supports ONVIF 2.0.1 at present.

Alarm setting

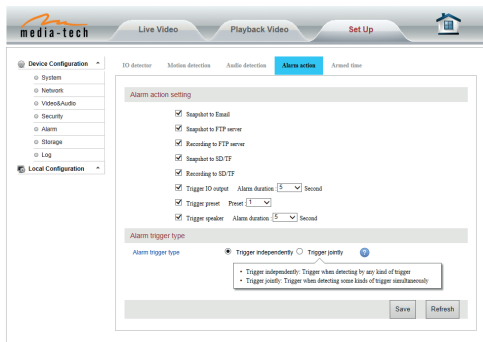
Motion Detection Setting



Please click "save" after the settings are done, and motion detection takes effect. The higher value, the higher sensitivity. The camera will trigger corresponding alarm when any change occurs in the detection area.

Alarm mode setting

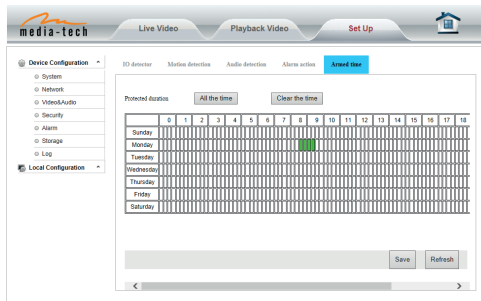
After camera detects any change, it will alarm as several mode.



Alarm time setting

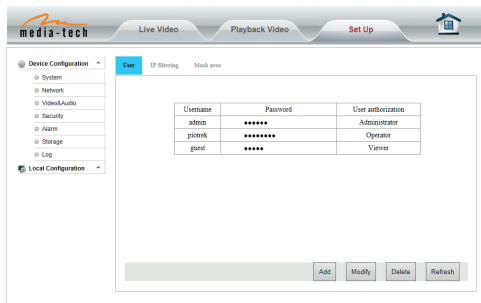
The device will trigger the alarm only during the scheduled time period, you can select the scheduled time according to your request. Example of figure below, set armed time from Mon 8:30 to 9:30, you only need to click the corresponding time block to set them, the time block will become green when you selected.

Note: Please make sure your system time is correct before you set the alarm time period.



Advanced setting

User management



There are 3 levels of user authorization in it.

- Administrator: "admin" has the highest authority. It can do any settings. The factory default password: 123456.
- Operator: user can only operate the device but can't do any settings.
- Viewer: user can view the video, but can't operate the device.

Note: Please change these passwords when your first use to ensure your safety.

E-mail Setting

Please click "Test" to test if the E-mail setting is successful.

FTP setting

Before to use FTP function, please get the following ready.

1. FTP user name and password
2. FTP storage space and the authority
3. Create sub-category to store the video or pictures.

Notice: The password should not contain special characters.

Multiple settings

Please set multiple devices here first to view 4 split screen.

System setting

Device information

media-tech

Live Video Playback Video Set Up

Device Configuration

- System
- Network
- Video&Audio
- Security
- Alarm
- Storage
- Log
- Local Configuration**

Device Status

Current users: 0

Network connection: Wireless

MAC address: 78:A5:DD:9E:41:FD

Recording status: No recording

SD/TF status: No SD/TF

Internet IP address: Check internet IP

Date and time setting

Please select the time zone at first and then select a NTP server and obtain time from network time server.

media-tech

Live Video Playback Video Set Up

Device Configuration

- System
- Network
- Video&Audio
- Security
- Alarm
- Storage
- Log
- Local Configuration**

Time

Current time: 2016-01-07 10:50:03

Time setting

Timezone: (GMT+01:00) Sarajevo - Skopje - Warsaw - Zagreb

Sync with PC: Confirm

NTP service

Enable NTP: ☒

NTP server: time.nist.gov

Initialize setting

media-tech

Live Video Playback Video Set Up

Device Configuration

- System
- Network
- Video&Audio
- Security
- Alarm
- Storage
- Log
- Local Configuration**

System

Time

Pres&Tilt

Others

Multiple Settings

Maintenance

About

System setting

Reboot: Reboot

Restore to default: Restore to default

Backup setting: Backup setting

Restore backup setting: Przeglądaj... Restore backup setting

Upgrade: Upgrade

Restart timing settings

Enable schedule reboot: ☐

Save

If you click “Confirm” of Backup setting data, the camera will create a file, you can store it to your computer, and you can directly call this file to restore the settings. The function helps to manage the cameras and no need to do all the settings again.

The firmware upgrade is for updating system firmware and web UI.

System Log

media-tech

Live Video Playback Video Set Up

Device Configuration

- System
- Network
- Video&Audio
- Security
- Alarm
- Storage
- Log

Local Configuration

Log

2016-01-04 19:03:57 admin,set zonetime and time
2016-01-04 12:03:57 admin,set ntp
2016-01-04 12:08:29 admin,set wifi
2016-01-04 12:09:01 admin,set upnp attr
2016-01-04 12:15:15 admin,set wifi
2016-01-04 12:15:56 admin,set wifi
2016-01-07 10:19:27 admin,Set Record Param
2016-01-07 10:19:27 admin,Modify Record Plan

☐ Check by time Check Delete Refresh

EN

Due to continuous development specification and appearance of product are subject to change without prior notice. For technical support please visit www.media-tech.eu.